

The Clapboard

Fall/Winter 2014

Preserve Historic Sleeping Bear

Partnering with Sleeping Bear Dunes National Lakeshore to Preserve and Interpret its Historic Structures and Landscapes

Donor Offers 25K Membership Challenge Match

We're very pleased and excited to announce a new membership challenge match from one of our generous donors. They have offered a \$25,000, dollar for dollar match through February 15th. The intent of the match is to strengthen our base of support. Our donor writes, "My hope for this challenge match is to encourage others to donate, so that together we can preserve even more of these wonderful and historic places we love." And this is where you, our loyal members and our new donors come in.

What Donations Qualify? Four Types

There are four ways that you can help us meet the match. First, donations from new members qualify. If you have never donated to Preserve Historic

Sleeping Bear, this is the perfect time to join! Second, if you were once a member but let your membership lapse (you haven't donated since September 2013), this is your opportunity to make a difference with your membership renewal. If you are not sure of your last donation, please contact us.

Third, if you are a current member and increase your gift from last year by at least \$25, that portion of the gift will qualify. Finally, anyone that joins our Plowshare Society (a commitment to \$500 or more annually) will qualify. We hope all of you will embrace this opportunity and double the impact of your gift!

As of today, we have raised over \$11,000 thanks to some generous donors. We have \$14,000 to raise in the next 60 days. In addition to your qualifying donation, you can help by inviting your friends to join in the match through email, or sharing our Facebook post about the match on your Facebook page.

A donation form can be found in the back of this newsletter, and current members will receive a letter in the mail with a donation envelope. Of course, you can always give online at phsb.org. The clock is ticking. Thank you for helping us meet the match!

"My hope for this challenge match is to encourage others to donate, so that together we can preserve even more of these wonderful and historic places we love." - Match Donor

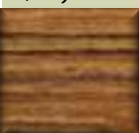
pay online at www.phsb.org

\$25,000



Goal

• \$11,120



MATCH
STATUS

**JUST 60 DAYS
LEFT TO MEET
THE MATCH!**
PLEASE GIVE TODAY

A Message from Our Chair



This is the time of year that makes me happy—happy and proud. The federal fiscal year concludes at the end of September and Park staff spend the first part of October gathering data about the past year.

All types of metrics are totaled to profile the year's work such as number of visitors, number of campers, number of school groups etc. At the same time, Susan Pocklington, our executive director, pulls together similar numbers for *Preserve* to add to the Park's yearly report. Susan lists the number of projects and the value of materials donated and purchased. She tracks the number of hours each volunteer has worked during the past 12 months, and determines the dollar value for the labor donated to the Park. With all of this information, she comes up with the total contribution *Preserve* made to the preservation of the historic resources of Sleeping Bear Dunes National Lakeshore.—this year that number is \$149,104.

For years, around late fall, I have seen the final report and I am always impressed with how much has been done. During the year we are aware of a handful of volunteers working a long weekend or two, repairing a historic building. This is also happening several times a summer and also in the spring and fall. Individuals ar-

range to undertake small projects, groups schedule work sessions, and your contribution pays to hire professionals for projects that require specialized skills. This all adds up, and I am once again impressed, pleased, and proud of this organization and what it is able to accomplish year after year with all the people that help us, especially our donors and volunteers. You will see the details of this year's contribution by *Preserve* elsewhere in this newsletter and I hope it makes you feel a part of something special—because these resources are extraordinary.

However, this total of volunteer hours, contributions of money and materials is only part of the impact *Preserve* has on the preservation of the park's historic buildings and landscapes. Promoting a wider awareness of the Park's many diverse cultural resources through activities like our farm tours, the Port Oneida Fair, guide books, and other special events has a direct impact on the Park's commitment to historic preservation. Each year Sleeping Bear Dunes National Lakeshore's end of the year report lists the numerous historic preservation project undertaken by the Park staff using Park funds and it is an impressive number of projects. *Preserve's* advocacy for historic preservation and creating a public that understands, enjoys and appreciates these landscapes keeps historic preservation a priority. Thank you for your yearly support which allows us to do this work.

Welcome New Board Members



Mary Crane—With a 72 year association with Port Oneida, Mary has personally experienced what others consider history. Mary has a B.A. in American History and has served as

Chair of the Canton MA, Historical Commission, and years as a docent for *Preserve* as well as for Historic New England, and Theodore Roosevelt Inaugural Site in Buffalo, NY. She is also a talented writer. After living many winters in New Hampshire, Mary and her husband Frank have relocated to Grand Rapids, MI during the “off-season” so they can be closer to their Port Oneida home.



Fred Siegmund—grew up in Michigan and has life-long connections to Leelanau County and a home in Leland. He started with *Preserve* as a volunteer on mainland projects in 2007

and has worked on the Katie Shepherd project the past six years. He made a living as an economist for the U. S. Dept. of Labor doing analysis, forecasting, and writing monographs, reports, newsletter and journal articles. He did some teaching and a variety of writing and research through, or for, the District of Columbia Government, Howard University, University of the District of Columbia and others.

Eckerdt and Olsen Painting

Two of the largest and perhaps most visible projects we took on last summer were the painting of two historic structures. Preserve provided funding for, and worked directly with, the painting contractors. Partial funding came from one of our donors who loves Port Oneida. The project also required replacing deteriorating siding prior to painting. Thanks to the Park's Bob Bertschy, Lee Jameson and their maintenance crew for collaborating with us by efficiently taking on that task, with new boards provided by Preserve.

Charles and Hattie Olsen Barn

The Olsen Barn needed new paint on its nearly bare wood siding. We hired SEEDS for the job, requiring the use of a lift. It took some testing to get the color right but the result is beautiful. Two days after it was completed photographers began stopping by to capture the barn boasting its handsome new red coat!



Left: SEEDS in the bucket lift painting Olsen barn; Right: a photographer takes advantage of the early morning light on the barn

Eckerdt Farm

Preserve contracted with a professional company to scrape and paint the exterior of the Eckerdt farmhouse which was peeling badly. Based on family history and evidence of old yellow paint under the red siding, we restored the house to its original color.



Before and after shots of the Eckerdt farm painting project

We're Adopting!

Preserve Historic Sleeping Bear has officially become part of MDOT's adopt-a-highway program. We have been on the wait list for some time to adopt the section of M-22 that runs the length of the Port Oneida district. The Zonta Club has been the adoptee for that section for several years, and has agreed to have us partner with them. Both organizations will have their name on one side of the signs going in each direction, and will share in the clean-up, including a joint effort in April. We look forward to this partnership with the Zonta Club, and keeping Port Oneida beautiful.



Adopt-A-Building/Landscape

Last year we launched both an adopt-a-building and adopt-a-landscape program for historic properties. We continue to improve and expand the maps and documents for this program, to be released this spring. Thank you to those that have already adopted a site. Last summer we saw how helpful the adopt-a-building program is. One couple reported damage at their adopted site to us immediately and the Park responded quickly. Without the program it could have been weeks before the damage was noticed. The adopt-a-landscape program involves more hands-on activity such as pruning orchards, removal of non-native species, or field mowing. Please contact us if you are interested in adopting!

Burfiend on the Bluff

It was a glorious day in July for the thirteen Preserve Historic Sleeping Bear volunteers who arrived at the Carsten Burfiend farm for two mainland projects. Side-by-side white clapboard farmhouses look out over Lake Michigan from a grassy meadow in the Port Oneida district. If its not the best place in Leelanau to spend a day working outdoors it must be close to it. Long-time Preserve volunteer and professional builder-contractor Jack Boss took charge of five of the volunteers in a day-long carpentry project to restore the west-facing porch on the north farmhouse. Seven others joined Steve Stier in a window restoration workshop.

WINDOW PROJECT

Preserve volunteers often find dried, broken and missing window glazing on the building projects we take on. It may be a dying art in suburbia but not at Preserve—we've done several windows over the years. It's a messy job to clean up those sashes and get them ready for some new putty. It takes lots of chipping and maybe some heat using a hair dryer, which John Flynn found helpful as seen here (right).



Top: Jack Boss; Right: Fred Siegmund, Doug Detzler, Jim Kelderhouse

PORCH PROJECT

Rot and sagging were the issues with the porch, but Jack Boss cautioned, "save the cedar siding; that's serious money." We always take great effort to salvage as much original material as possible. Preserve supplied the hemlock from its barn storage stash to rip new custom beams. It was a tight fit but Jack's portable table saw made the cuts easy and volunteers supplied the muscle to put them up. Notice the repaired corners on the deck (above). The cedar siding was put back and it was time to plumb the posts, fit the trim boards and finish with painting the new wood. Great job! Many hands make light work.



The finish work is more fun as Steve Young and Margo Detzler could see, watching Steve Stier put the finishing touches on a new bead of putty. Window restoration is needed throughout the Park, and we will continue to in-

clude window projects in our annual work. As a result of this workshop, Preserve now has seven volunteers more familiar with window restoration—John Flynn, Peter Katz, Margo Detzler, Steve Young and Director Susan Pocklington. Thanks to Steve and all.



Afternoon shot of carpenters (L to R) Leonard Marszalek, Doug Detzler, Fred Siegmund, David Watt and Jack Boss at the table saw.

The Katie: A Six Year Reminiscence

By Fred Siegmund



Arriving at the dock in Leland—loading the Park boat with 10 days of gear, food and some tools for North Manitou Island historic preservation project

The Katie Shepard Hotel restoration on North Manitou Island continued for the sixth year with another ten days of on-site work starting August 15. A crew of 14 veterans and four adventurous newcomers arrived in Leland to board the Manitou Island ferry for the 12-mile trip across “Big Blue.” They came from the far reaches of Grand Rapids, Battle Creek, Holland, Lansing, Newaygo and Kalkaska counties and close by Benzie and Leelanau counties.

These are a dedicated bunch, up at the first crack of dawn determined to use every minute of daylight to work, explore, and talk until the pitch dark of night and exhaustion cry out for sleep. Preserve volunteers become the guests of the National Park Service able to use comfortable buildings with bunkrooms, bedrooms, full baths, a spacious kitchen, and indoor and outdoor areas for sitting and talking. Newcomers find themselves in a miniature social

system that resembles the summer camp of their youth.

Volunteers tend to arrive with lots of do-it-yourself work behind them. Those who can handle a scraper and a paint brush learn there is plenty of work for them, but those with carpentry and construction know-how often find themselves in a challenge of problem solving that tests their skills and their creative energies. Veteran project director, David Watt, has mastered the delicate art of managing volunteers with a combination of planning, suggesting, asking, coaxing and trusting.

After six years of hard work we are ready to show off our results, for which we feel justly proud. All of the extensive structural repairs are finished, along with exterior repairs and painting including the wrap-around porch. The spacious and elegant parlor and four first floor guestrooms have replacement or restored tongue and groove beaded paneling. The upstairs hallway and two of its guestrooms had paneling installed this summer. Three upstairs guestrooms still need paneling, but restoration nears completion.

After work there is the lure of a remote island and an eagerness to learn island history and explore cottage row, the lumber mill and its 15 thousand acres of open space. This year we had the benefit of two experienced island hikers: newcomer Vince Sadowski, and veteran



Early evening hike at the Maleski Farm .L to R: Vincy Sadoswksi, Stacie Hill, Sally Byle, Elizabeth Wheeler, Mark Wilson, Fred Siegmund, Doug Detzler, Karen Wells, Mike Tenbrock, Margo Detzler, David Watt. Photo—Meggen Watt Photography

Park employee, Mark Wilson, one of many Park staff ready to help and support us. Two big groups made the 6.1 mile round trip to the Maleski farm site on the north bluffs and then another 7.5 mile hike to the elusive McComber Monument, a survey location on a remote ridge on the eastern edge of the island. It was a tough and determined group that slogged through heaps of soggy leaves and bushwhacked up the hillsides to the top

of the ridge; no one complained when we got there. The next evening another ambitious group set off south

(continued on pg. 6)

(continued from pg. 5) The Katie: A Six Year Reminiscence

to explore the Stormer lumber camp on a 9.1 mile trek that ended after 10:00 o'clock, when all gave praise for the headlamp.

Having room and board in close quarters generates lots of socializing. Over the years there are some stories to remember along with the daily discussions, chit-chat, and razzmatazz. Who could forget David Taghon's stories of Empire and the eccentric brothers written into Anna Marie Ooman's play "Whaddaya Give." Then there were Arvin and Sally Byle's sailing adventures aboard the tall ship Madalene; Ray Webb's tales of prospecting for hidden treasure in the Michigan U.P.; and David Watt's annual humor readings of Traverse City life from a by-gone era.

Over the years there was some fine dining. Let's not forget Jim Fuscaldo's Lemon Chicken, or the Webb family Lasagna, or Meggen Peterson's fillets of whitefish served with cherry lentil pilaf, corn on the cob, warm and crusty French bread. Memorable deserts include Meggen's fresh apple pie made from a shirt full of island apples gleaned from a cottage row apple tree.



Arvon Byle reinstalls ceiling board in parlor

Long live the memories of work, fun, and friendship. And long live the Katie, which was dilapidated and dangerously close to collapse when Preserve took on the project six

years ago. Now it is saved by Preserve Historic Sleeping Bear in cooperation with the National Park Service and the efforts of its volunteers, Director Susan Pocklington, and the foresight and generosity of its donors.

All who have worked on the Katie want to see it put into use as a primitive hostel or inn for backpackers and lovers of the island's open space. The National Park Service calls this adaptive reuse. For the volunteers it's the last and logical step to realize their goal to preserve part of a quaint and graceful summer life so much a part of historic Sleeping Bear.

Volunteers Impact Cultural Landscape

It was a rather discouraging sight. Only two years earlier, SEEDS had cleared invasive black locust trees from the knoll and fields between the Olsen farm and Schoolhouse, and along the Bayview Trail to the Miller Barn. Now the vegetation was back, growing profusely and quickly, covering the hillside and encroaching the trail. What to do? Preserve decided to not only focus our summer field restoration project here, but also to put the area up for "adoption" (see *article on pg. 3*) as a maintenance strategy.



Supervisor Fran Alfs and Karen Wells at work

At our two-day June project, six volunteers led by Fran Alfs, used loppers in knee-high, wet grass to remove large bushy saplings, and treated stumps to prevent re-growth. We

captured Sleeping Bear Dunes biologist Becky Hill's training on video so we could offer this project to other groups looking to help. Three volunteer groups continued our work.



Knoll covered with Black Locust saplings

Cherry Republic employees spent a few hours in June chipping away where Preserve had left off. TCAPS students furthered the effort on a warm July day. And this fall we coordinated a project with the Christian Brigade of East Lansing. The contribution of their young men and leaders, along with Sleeping Bear Dunes Volunteer Coordinator Matt Mohrman, finished off what we'd started. The difference in the landscape is marked. We'll be at work restoring other landscapes next year. Please join us!

Historic Log Structures Being Preserved

Faust Cabin

Many have admired this beautiful cabin at the top of Inspiration Point in Leelanau County overlooking Glen Lake. The structure, reminiscent of Adirondack style lodges, was sold to the National Park willingly by the family of former life-long owner Mary Faust. Dubbed “**Glen Craig**” by Faust, the cedar log home was built in 1929. Faust designed and had the cabin built on property she purchased from D.H. Day, the Glen Haven entrepreneur. Rustic furnishings grace the home, and due to the family’s generous donation, most of the furnishings will remain with the property.

Laura Quackenbush, Museum Technician for the Park has been working with the family to select and catalog the furnishings, and *Preserve* funded their appraisal for the family’s tax return. Retaining the original furniture with the structure is a wonderful way to help tell the story of the Glen Lakes Resort Community. The building is eligible for the National Register of Historic Places.

The Park is exploring how best to use the structure for the public’s enjoyment and education. *Preserve* has begun fundraising efforts for its restoration which includes extensive window repair, foundation repair, lead-abatement and electrical services at an estimated \$132,500. With the help of the first donor who has contributed an initial \$5,000, we hope to begin working on window repair in collaboration with the SEEDS organization. We have created a promotional video for fundraising that will be launched in January.



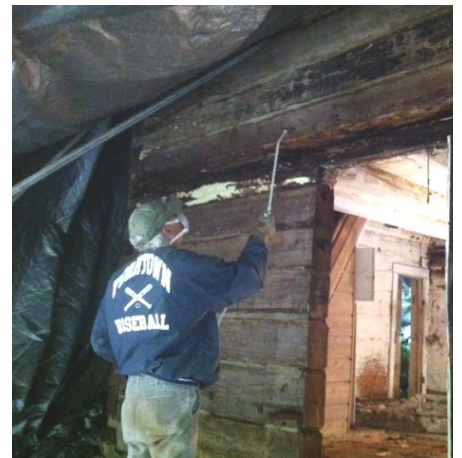
Kraitz Cabin

This past year *Preserve* took the important first steps to save the Park’s oldest pioneer log cabin. The iconic cabin was built about 1860 by Francis Kraitz and his family, and had been left in altered, but good condition. Unfortunately, its age and original purpose were subsequently misidentified and it was determined not to be historic. More than a decade of deterioration followed which intensified when a large tree fell on the structure, damaging the roof.

This past winter we asked the Park’s help in removing two contemporary additions to restore the cabin to its original footprint. Then, last spring *Preserve* submitted documentation to establish the historic significance of the cabin, receiving approval for eligible listing on the National Register of Historic Places.

We located a huge heavy duty tent-tarp, and with the help of a group of young adult employees from the Culvers fast food restaurant in Cadillac, and Matt Mohrman, supervised by *Preserve*’s Bill Herd, and our hired contractor, we covered the entire cabin. The tarp not only protects the interior but also protects the exterior log walls. Next, our volunteers attacked, with a Park-approved application, the fungus that had been thriving on the damp interior of the cabin after heavy rains and snow of last winter. The cold dry winter air will continue to dry out the logs and deter growth of the fungus.

Over the winter we will work with the Park staff and
(Continued on page 8)



(Continued from page 7) **Kraitz Cabin**

local log cabin experts to prepare a plan for the restoration of the cabin, hopefully next summer. We will also be looking for grants and donations to fund the project. This unique structure will be preserved for future generations of Park visitors who will be able to see and feel a real log cabin built by a pioneer family, and one of the finest examples of log construction in the area.



Employees from Culver's restaurant in Cadillac strike a proud pose last fall after volunteering in the Park to help protect the Kraitz cabin

PRESERVE HISTORIC SLEEPING BEAR CONTRIBUTIONS for FY 2013-2014

CASH DIRECT TO PARK **\$1,972**

CASH IN KIND TO PARK

Preservation, Interpretation **\$32,000**

Preservation Projects **\$22,081**

C. Olsen Farm house kitchen and door repairs

C. Olsen Barn exterior painting

Carsten Burfiend porch repair

Eckerdt Farmhouse siding repair; exterior scrape and paint

Kraitz Cabin stabilization

Barn Workshop

Orchard Grafting

Katie Shepard Hotel

Olsen House/Interpretation **\$11,736**

Olsen House History Ctr.

Oral history

ROOTStories

Horse and Wagon Tours

Exhibit Development and fabrication

IN-KIND TO PARK

Volunteer hours – 3606 hrs **\$81,315**

TOTAL CONTRIBUTION: \$149,104

Saving the Antique Orchards



Yes, this is cherry country—but apples were also important to the early settlers in this region, with many antique varieties here in Sleeping Bear Dunes National Lakeshore. The Park has done extensive inventory and

identification of fruit trees on the mainland, and it's important to preserve these rare varieties for the future.

Toward this end, a new orchard grafting project was initiated this past year. Preserve Historic Sleeping Bear is providing funding for the collaborative project with the Park, DeYoung Farm/Leelanau Conservancy and the Leelanau Conservation District.



In addition, every May the Park offers an apple and pear pruning workshop for the public. This training provides the qualifications necessary to adopt an orchard through Preserve's adopt-a-landscape program. And finally, last

October, Preserve participated in an Antique Apples program hosted by the Park to raise awareness of the antique orchards, their locations, and why they were important in the Port Oneida Rural Historic District.

PHSB PROJECTS *for* 2015

PHSB takes on major projects that take extensive planning. They call for funding of materials and/or contractors, training volunteers in specialized trades, logistical and volunteer coordination and documentary research. The following projects are planned for 2015.

ESTIMATED PROJECT EXPENSES **\$117,200**

Tractor purchase - \$60,000

Ole Oleson Farmhouse

- Exterior Painting - \$7,000

Charles Olsen Barn

- Repair and coating of roof - \$4,000
- Repair west barn door - \$100

Carsten Burfiend Farmhouses (2)

- Exterior painting - \$11,000
- Window repair

Port Oneida Schoolhouse

- New roof - \$6,000
- Electrical upgrade - \$2,000

Antique Orchard grafting - \$500

Historical Research - \$500

Landscape restoration materials - \$100

Katie Shepard Hotel – North Manitou Island - \$6,000

- New roof
- Complete installation of ceiling boards
- Repair and paint screen doors and windows
- Cultural landscape restoration

Bufka Farm—paint barn doors

Riggs Cottage on NMI - \$1000

- Clean out deteriorated debris; repair partial ceilings
- Window repair

Kraitz Cabin Restoration - \$15,000

Glen Haven Historic Village— \$4,000

- Roof two houses—materials

Faust Cabin Restoration stage I - \$15,000

Tweddle School Porch Repair - \$500

On Your Mark, Set, Go!

The Port Oneida 5K Run/Walk is *Preserve's* main fund-raising event of the year. Mark your calendars for next year's event on Saturday, August 1, 2015. Some changes and additions are in store so stay tuned!

Thanks to all who participated last summer. Rachelle Christensen, age 26 from Macomb, MI was the overall female winner with a time of 22:46, and the overall male winner was Jimmy Seekamp, 18 years old from Interlochen timed at 19:15. Mark McCurties, 33 from Elsah, IL came in second at 20:48. A complete list of winners can be found on our website at phsb.org.



Much thanks to our Supporting Cash Sponsors—Art's Tavern, Riverfront Pizza & Specialties, and Serbin Real Estate, and Patron Sponsors Cottage Bookshop, Haystacks, Leelanau Coffee Roasting, and Northwood Hardware. Special thanks to our food donors Cherry Republic, Oleson's Food Stores and Stonehouse bread! And to the following businesses for donating prize giveaways: Anderson's Market, Bay Wear, Black Star Farms, Bluebird Farm Soap, Crystal River Outfitters, Lake Affect, Leelanau Vacation Rental, M-22 Store, Miser's Hoard, Momentum of Glen Arbor, Riverside Canoe Trips, Sleeping Bear Surf and Kayak, and Totem Shop.

We couldn't have this event without our awesome volunteers serving food, manning the trail, parking cars, handling registration and more! Thanks to all our volunteers (listed on page 13).



Port Oneida Fair—Always a Changin’

Every year there’s something a little different about the Port Oneida Fair. From the button collector at Thoreson Farm, to the new Pasties vendor at the Olsen Farm, and an old-fashioned cricket game at the Burfiend site, there’s something for everyone. Many visitors say that is the reason this special event in August is one they plan their vacations around. No matter what the age, young or seasoned, it’s a family event that bridges the gap in years and promotes sharing of long-ago lifeway practices.

It’s the single largest event hosted by Sleeping Bear Dunes National Lakeshore, co-organized by Preserve Historic Sleeping Bear and a few community members. Demonstrators, staff, and volunteers welcomed, entertained, and educated about 3,300 visitors. One reason for its popularity is that visitors understand and feel the authenticity of these buildings and landscapes. Nothing was relocated here to re-create a historic community—this is a historic community. It’s a—museum meets county fair—feeling,

not to be forgotten. Sprawled over many acres, whether traveling by car, horse and wagon, hiking or shuttle, from one farm to the next, gives visitors a real-time experience of the Port Oneida community that it was.



Music from inside a barn invites children in to dance; large oxen are stroked by tiny hands; men try a two-man saw; the whistle and smoke of the steam engine draws curiosity; a historic food cooking demonstration inside whets the appetite

for home-cooked pasties outside. Honey, quilt and rope making foster appreciation and questions. And a one-room school session emphasizes values and patriotism

All of this costs money of course, and as the Fair fiduciary once again, *Preserve* encourages people to consider this when they find a milk can at each site inviting donations—crucial to funding the Fair. The Park also pays a portion of expenses, and our generous business sponsors, and participants of the silent auction help offset the costs as well. August 7 and 8, 2015 is the date for next year. You won’t want to miss it—there’s always something new, even if it’s just the conversation it spurs with your family!



Heritage Trail Coming to Port Oneida



The multi-use Sleeping Bear Heritage Trail is making its way to the Port Oneida Rural Historic District next spring. The trail will be on portions of the Bayview Trail (left) and

come directly behind the barn at the Olsen Farm. Clearing of the trail already took place in the fall. Plans call for an aggregate, rather than asphalt surface in Port Oneida,

which *Preserve* strongly supported. We also supported a change in trail location to prevent cutting through the orchard at Kelderhouse farm (a future Park visitor station). Of course the trail will bring more visitors to Port Oneida and we will be ready with our new exhibit opening in the spring. *Preserve* also hopes to offer food on the trail in one of the buildings in Port Oneida as an income-generating activity. We are pleased that more people will experience Port Oneida through biking and hiking to maintain the peaceful setting of this historic landscape.

Horse and Wagon Tours a Hit



By Bill Herd

Tom Cyr's horse and wagon rides have been a popular part of the Port Oneida Fair for many years. Last summer, in cooperation with Tom's Black Horse Farms, Preserve provided horse and wagon tours of the Port Oneida Rural Historic District on a more regular basis. We gave tours several weekdays in July and August to individuals, families and groups, and hoped they would be popular. I tagged along as tour guide on most trips.

I have given tours of Port Oneida for over 30 years to all kind of groups and using different means of trans-

portation. For me, the horse and wagon tour is by far the very best way for a group to experience the historic Port Oneida community. The wagon is mobile enough to see a large part of the district, but still moves slowly enough to be able to point out features and talk about them as we move along. We do not feel that we are passing through the landscape but are actually in it – experiencing some of the same sights, sounds and smells as its early residents.

For a donation of \$18 for adults and \$11 for children ages 4-12, folks who took the wagon tour were more than pleased. They agreed that it is a fun and informative way to experience Port Oneida. Several lucky kids got to ride up front with Tom and even give the horses commands.



Still everyone, young and old, had a great time. Volunteer Margo Detzler and her grandchildren developed a treasure hunt that goes with every tour and keeps the children (and adults we found!) curious about what to look for. Thanks also to Jean Jenkins who allowed Tom a place to store his wagon in Port Oneida, and for being our first tour guide in training—she did a fantastic job! With the success we had this year we plan to continue the wagon tours next summer. Anyone want to be a tour guide? Contact our office.

New ROOTStories Shares Descendants History



ROOTStories is a program inviting descendants of historic properties in the Park to come back and share their family history—stories of life at their farm, log cabin or inn. Last July, we enjoyed having Norbert Bufka for our first official program. Mr. Bufka was the last Bufka born at their farm now in

the Park, near Good Harbor. In a two-hour program he took us back in time to the late 19th and early 20th centuries. Starting at the Olsen Farm he shared memorabilia, then continued to the Bufka farm for an up-close tour of the buildings inside and out. Mr. Bufka, who is



Historic photo of the Bufka Farm in Good Harbor

retired and lives in Midland with his wife Sue, has written three books related to his family history which are available at the Olsen house.

Preserve at Work in the Park



The Clapboard Applauds Our Volunteers!



Our volunteers are the backbone of the work we do. Their work benefits Sleeping Bear Dunes National Lakeshore and all of those that visit the Park. Preserve's Board and staff applaud and thank all of our volunteers for partnering with us.

If you'd like to volunteer, please sign up on our website at www.phsb.org.

Fiscal year 2013-14 3,606 Volunteer hours = \$81,315 value

OPERATIONS

Cheri Boss
Ed Crippen
Maureen Doran
Bill Herd
Jim Horn
Steve Rader
Linda Stevenson
Ty Stuber
Jim Vachow

DOCENTS/TOURS

Norbert Bufka
Mary Crane
Bill Herd
Jean Jenkins
Nancy Olsen
Dorie Price
Charlotte Smith
Linda Stevenson
Tom Van Zoeren

PORT ONEIDA FAIR

Fran Alfs
Chris Armbrrecht
Frank Crane
Mary Crane

David Doran
Maureen Doran
Jean Jenkins
Scott Jenkins
Heather Koch
Donna Novak
Nancy Olsen
Jim and Linda Phillips
Dorie Price
Steve Rader
Charlotte Smith
Linda Stevenson
TCAPS
Jim Vachow
Jill Webb

Olsen Site Fair Presenters

Kathleen Bridson
Cherry Republic
Marge Habegger
Bill Herd
Mike Hulbert
Jerry Kloock
Peg Kloock
Heidi Neiderer
Amy Peterson
St. Mary's Quilters

Tillers Int'l
Tom Van Zoeren
Shari Whittaker
Joel Wright

PORT ONEIDA BBQ

Chris Armbrrecht
David Doran
Maureen Doran
Nancy Gerould
Bryan Gerould
Bill Herd
Heather Koch
Linda Stevenson
Jim Stevenson
Karen Wells

PROJECTS

Burfiend Porch

Jack Boss
Doug Detzler
Jim Kelderhouse
Leonard Marszalek
Fred Siegmund

Burfiend Windows

Margo Detzler

John Flynn
Peter Katz
Susan Pocklington
Steve Stier
David Watt
Steve Young

Gardening

Maureen Doran
David Doran

Field Restoration

Fran Alfs
Cherry Republic
Christian Brigade
Doug Detzler
Margo Detzler
Peter Katz
Fred Siegmund
Jim Vachow
Karen Wells
TCAPS

North Manitou

Arvon Byle
Sally Byle
Gray Carlson

Jerry Conroy
Doug Detzler
Margo Detzler
Jim Fonte
Stacie Hill
Jim Kelderhouse
Meggen Petersen
Susan Pocklington
Vince Sadowski
Fred Siegmund
Libby Siegmund
Mike Tenbrock
Mark Vysoky
David Watt
Ray Webb
Karen Wells
Elizabeth Wheeler
Tom Whitaker

Olsen Interior

David Adams
Jack Boss
Doug Detzler
Margo Detzler
Bill Herd
Jim Kobberstad
Janice McCurties

Steve Rader
Fred Siegmund
Linda Stevenson
TCAPS

Exhibit

Julie Avery

PORT ONEIDA RUN

Andrew Beck
David Doran
David Doran Jr.
Maureen Doran
Megan Gerould
Nancy Gerould
Barb Kobberstad
Jim Kobberstad
Kelly Kobberstad
Colin Johnstone
Don McNew
Peggy McNew
Fred Siegmund
Libby Siegmund
Jill Webb

If we have missed anyone please let us know!

The MILESTONE MARKER

The following volunteers have reached new benchmarks in volunteer hours. Congratulations and special thanks for your devotion!

700 hours

Doug Detzler
TCAPS

500 hours

Margo Detzler
Fred Siegmund

400 hours

Maureen Doran
Stacie Hill

300 hours

Ed Crippen

200 hours

Bill Herd
Meggen Petersen
Linda Stevenson
Tom Van Zoeren

100 hours

Mike Tenbrock
Ray Webb

MEET THE MATCH!

BE A STEWARD of SLEEPING BEAR

Please renew your membership! And if you are a new donor, lapsed donor, member that gives over what you gave last year, or become a Plowshare member, your donation will also help us meet the 25K match!

Enclosed is my tax-deductible contribution

\$5,000+	Preservationist	_____
\$2,500-4,999	Harvester	_____
\$1000-2,499	Barnraiser	_____
\$500-999	Cultivator	_____
\$250-499	Tiller	_____
\$100-\$249	Homesteader	_____
\$50-99	Settler	_____
\$35-49	Pioneer	_____
Up to \$34	Friend	_____

Please Consider Becoming a Plowshare Member

_____ Check here to join the Plowshares with a pledge to give a minimum of \$500 annually

Name _____

Email _____

(please provide to help us save on postage and printing costs)

Phone _____

Address _____

City _____ State _____ Zip _____

Summer _____

City _____ State _____ Zip _____

Gift Membership/Memorials/Honorariums

A wonderful way to honor a friend or loved one. A card will be sent to the family of the individual for whom the donation was made and it is also noted in the newsletter.

This is a Gift Membership _____

This is a Memorial or Honorarium Gift _____ In memory/honor of (circle one) _____

Send card to: Recipient Name _____

Recipient Address _____ State _____

Zip _____ Phone _____

Make checks payable to PHSB.
Mail to: P.O. Box 453, Empire, MI 49630

or Donate Online at www.phsb.org

RAISE YOUR HAND!



We're looking for people to raise their hand and get involved with Preserve Historic Sleeping Bear.

Applications are being accepted for our Board of Directors and Committees.

Committees:

_____ Adaptive-Use

_____ Development

_____ Outreach

_____ Projects

OR volunteer for one of the following:

_____ Preservation Projects

_____ Olsen House Docent

_____ Tour Guides

_____ Adopt-a-Building/Landscape

Email us at phsb@leelanau.com for an application.

GIFTS * HONORARIUMS * MEMORIALS

A membership to Preserve Historic Sleeping Bear is a meaningful gift for someone who loves Sleeping Bear Dunes National Lakeshore. For the person who has everything, it makes a great Christmas, Birthday or Wedding gift. A gift in honor or in memory is also a unique way to recognize a loved one.

LIFESAVER LEGACY

Ensure a legacy you can be proud of. Planned Giving through bequests and donations of retirement accounts may be tax free for qualified seniors. For information visit us at www.phsb.org

Please keep us updated on your current email address so we can keep you updated on our work and activities. Email us at phsb@leelanau.com. And please friend us on Facebook!



Thanks to Our Members for Their Support

(Gifts received October 1, 2013—September 30, 2014)

Preservationist

(\$5,000 & up)

Anonymous

Anonymous

Harvester

(\$2,500-\$4,999)

Cherry Republic

Linda Stevenson

Barnraiser

(\$1,000-2,499)

David and Maureen Doran

Gary MacDonald

PDM Lumber

The Karen Viskochil Fund of
The Minneapolis Fdn.

Cultivator

(\$500-999)

Dave and Jacqueline Adams

Paul Skiem and Beth Brooks

Lynn Bufka

Paul Dechow and Joanne Blum

Ann Huffman

Don and Mary Ellen Marik

Janet Moll

Susan Pocklington

Richmond Architects

Frank and Barbara Siepker

Barbara Vilter

Ben and Cynthia Weese

Tiller

(\$250-499)

David Anderson

Art's Tavern

Carol Sue and Norbert Bufka

Grainger Company

David Noling and Victoria Bailey

Ron and Julie Porritt

John and Margaret Sargent

John and Sara Jane Tichon

Larry and Marcia Webb

James Wynns

Homesteader

(\$100-249)

William and Vicki Anderson

Chris and Gary Armbricht

Julie Avery

Bob Ball

Warren Berthelsen

Carol and Lee Bowen

Alan Campbell

David Card

Frank and Mary Crane

Ed Crippen

Ced and Betty Currin

Michael Dailey

Doug and Margo Detzler

Ed and Kathleen Dunn

Jeff and Nancy Fisher

Lori Holstege and David

Quimby

Scott and Jean Jenkins

Mark and Cheryl Jenness

James and Elaine Johnson

Richard Johnson

Peter Katz

Russ and Eunice Koch

Doug and Lou Ann Kohlbeck

Robert Lanphier

Nicholas and Kathleen Lomako

Nelson Lytle

Victor Mann

Leonard Marszalek

Darlene and Robert Martin

Sue Nichols

Lawrence Noling

Betty Olsen

Shirley Osterbrock

Jack Overhiser

Denis and Martha Pierce

Dave Pocklington

Senator Donald Reigle and

Lori Hansen

Riverfront Pizza and Specialties

Ronald and Patti Robinson

Mary Rodman

Bernard and Phyllis Senske

Rob Serbin Real Estate

Fred and Libby Siegmund

Barbara Stuber

Makram and Jane Talia

Paul and Karen Travis

John Tris

Jim Vachow

Bruce Wagner

David Watt

Justice Elizabeth Weaver

Donald Wick

Eric and Barbara Winkelman

Janet Wood

Wayne and Sharon Workman

Dennis and Jan Wyckoff

Michael Wyse

Settler

(\$50-99)

Carl and Nancy Ballou

Rick Bandstra

Bruce and Mary Barber

Elaine Brigman

Rob and Kathy Cojeen

Cottage Bookshop

Mr. and Mrs. Cyril Curran

Robert Dumke

Michael Flug and Suzanne

French

Susan Fox

John Griffith

George Haberer

Bill Herd

Roger Hersey

Anne Hoyt

Lee Jameson and Barbara

Nelson-Jameson

Karen Kalichman

Aaron Kirk

Vern Korkus

Bob Kruch

Claude Lambert

Leelanau Coffee Roasting

Ted and Patricia Ligibel

Dan Moscow

Northwood Hardware

Donna Novak

Stephen Olson and Lynn

Wilsher

Mark Pollock

Ovide and Cynthia Pomerleau

Robert and Jacqueline Pool

Thomas Porter and Miss

Kathleen Crispell

Judith Rycus

Lanny and Lea Ann Sterling

Jim and Penny Szczechowski

Mike Tenbrock

Carole Underwood

Tom and Alice Van Zoeren

Bill Waghorne

Harvey and Marilyn Warburton

Pioneer

(\$35-49)

Josephine Arrowood

Curtis and Donna Braden

Rich Brauer

Rosemary Cary

Michael and Joyce Deren

Ed and Judy Duda

Sally Evaldson

Jack and Jeannette Feeheley

Melissa Hennrick

David Hooper

Raymond and Vivienne Kell

Neal Neese

Leigh and Linda Payment

Sallie and Ron Payne

John and Lorayn Perkins

Meggen Watt Petersen

James and Linda Phillips

Dorie Price

Cindy Rosiek

Jim and Judy Schwantes

Brian Sniokaitis and Maggie

Smith

David and Diane Taghon

Marian Van Dore

Karen Wells

Laddie and Carolyn Zalud

Friend

(up to \$34)

Keith and Joanne Burnham

Robert and Kathy Davidson

William Hoff

Paul and Dolores Kurily

Robert and Joan Retsema

Jim Ristine and Mardi Black

Mary Scheuer Senter

Ty Stuber

William Wilson

Gifts in Honor

Bill Herd

David Anderson

Jim and Linda Stevenson

James Walton

Gifts in Memory

Roger Boelio

Sandy Gabel

Makram and Jane Talia

Dr. Julianne Hoff

William Hoff

Elizabeth MacDonald Ives

Gary MacDonald

Jerry Mack

Tony Jones

Mr. and Mrs. Charles Olsen

Todd and Paula Osbeck

Leon and Phyllis Pifer

Mark and Tammy Meenwenberg

Lillie Shaw

Darla Wortley

Wonderful Family Vacations

Jenny Nubel

Garnet Phillips

Mr. and Mrs. Cyril Curran

Ruth Sheridan

Barbara Arrigo

John Anthony Slavik

Warren and Mary Lou Sejud

Edward Wood

Janet Wood

Fair Sponsors

Allegra Printing

Anonymous

Art's Tavern

Becky Thatcher Design

Kathy and Robert Davidson

Paul Dechow and Joanne Blum

Devette Ford Insurance

The Homestead Resort

Huntington Bank

Leelanau Cheese

Leelanau Coffee Roasting

Leelanau Vacation Rentals

Serbin Real Estate

Bruce Wagner

In-Kind Contributions

9 Bean Rows

Dave and Jacqueline Adams

Anderson's Market

Bay Wear

Blackstar Farms

Bluebird Farm Soaps

Carlson's Fishery

Cherry Republic

Crystal River Outfitters

Dave and Maureen Doran

Haystacks

Lake Affect

M-22 Store

Miser's Hoard

Momentum

Naturally Nutty

Oleson's Food Stores

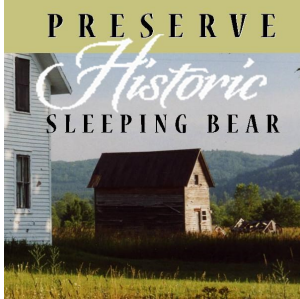
Pleva's Meats

Riverside Canoe Trips

Sleeping Bear Surf & Kayak

Stonehouse Bread

Totem Shop



P.O. Box 453
Empire, MI 49630
231-334-6103
PHSB@LEELANAU.COM
WWW.PHSB.ORG

NON-PROFIT ORG
U.S. POSTAGE
PAID
TRAVERSE CITY, MI
PERMIT #568

"Reviving the Past to Inspire the Present"

BOARD OF DIRECTORS

Bill Herd, Chair
FRANKFORT

Mary Crane
GLEN ARBOR

Ed Crippen
TRAVERSE CITY

Maureen Doran
EMPIRE

Fred Siegmund
LELAND

Linda Stevenson
GLEN ARBOR

Ty Stuber
WEIDMAN

Jim Vachow
SUTTONS BAY

STAFF

Susan Pocklington
Director

VOLUNTEER

Port Oneida Historian
Tom VanZoeren
MAPLE CITY

PARK MANAGEMENT

Dusty Shultz, Superintendent
Tom Ulrich, Deputy Supt.

REVIVING THE PAST TO INSPIRE THE PRESENT

def. of Revive: 1. To bring back to life or consciousness; resuscitate. 2. To impart new health, vigor, or spirit. 3. To restore to use

The over 360 historic buildings and elements in Sleeping Bear Dunes National Lakeshore, big and small, are nationally unique and offer much to inspire us today and in the future. With your help, Preserve Historic Sleeping Bear is working to help revive this sleeping history—building by building, story by story.

OUR PRESERVATION AND EDUCATIONAL PROJECTS

Sleeping Bear Dunes National Lakeshore bears its share of a nationwide National Park Service maintenance backlog. Preserve has been working for more than a decade to bridge the gap between the need and the available resources.

We also work to help others feel a connection to this history and discover for themselves how it can enrich their lives. Our interpretive venues share the stories of those who settled and survived here in the late 1800s. The buildings and the stories offer real facts about a hard life, but don't be surprised if you feel a sense of quiet appreciation and imagination that makes this history come alive!

CATCH THE VISION

We invite you to catch the vision that has been the dreams of many since we started this work in 1998. All we need is you. If you share our vision, we invite you to become a Steward of Sleeping Bear.